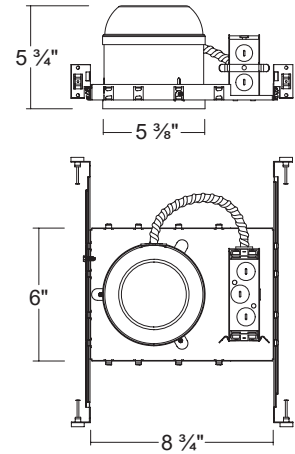


H550SICA

5" IC Air-Tight Incandescent Shallow New construction Housing (Max. 75W)



Dimensions



ORDERING INFORMATION

Model No.	Description
H550SICA	5" IC Air-Tight Incandescent Shallow New construction Housing (Max. 75W)

SPECIFICATION

Plaster Frame

- Galvanized steel construction. The housing can be removed from plaster frame to provide access to the junction box

Junction Box

- Listed for through branch circuit wiring
- Contains seven 7/8" knockouts
- New Cable Trap for easy installation of Romex Cable (US Patented / China Patented)

Bar Hanger

- Pre-installed Real nail easily installs in regular lumber, engineered lumber
- Bar Hangers are adjustable from 13-5/8" to 25" and can be repositioned 90 degree on plaster frame

Thermal Protector

- Self resetting thermal protector deactivates fixture if overheating occurs due to improper lamping or misapplied insulation.

Listings

- cULus Listed for Damp Location
- cULus Listed for Feed Through
- Certified under ASTM-E283 for Air tight construction

COMPATIBLE TRIMS

T5518 Eyeball



- Incandescent
75W BR / Par30

T5513 AT Cone Baffle



- Incandescent
75W BR / Par30

T5519 Cone Smooth



- Incandescent
60W A19

T5516 Dome Shower



- Incandescent
40W A19